

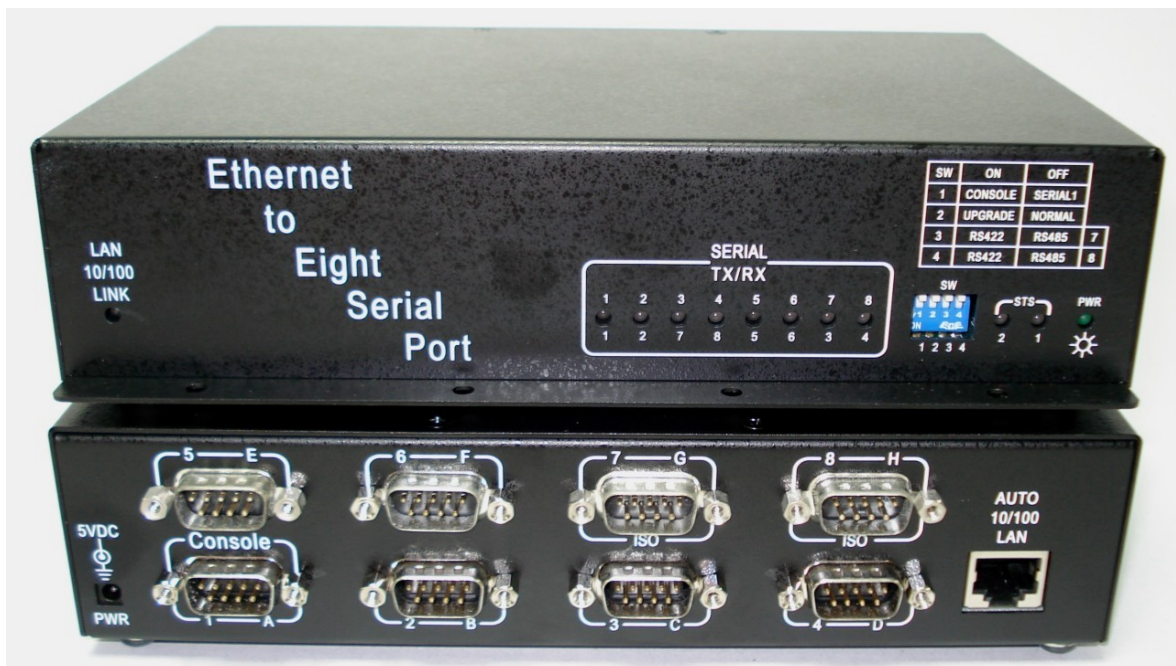
# ***IPOINT138***

## **IP to Serial Port Converter**

◆ **10/100Mbps LAN Connection**

◆ **8 RS422/485 Port**

◆ **Linux based system board**



- ★ **Auto-detecting** 10/100Mbps Ethernet interface.
- ★ Support WIN2000/XP/WIN7/8/10 **virtual COM driver**.
- ★ Support UNIX & Linux **real TTY** driver.
- ★ Support **TCP server/Client** mode.
- ★ Support **UDP send/receive** mode.
- ★ Support **WEB, TELNET and terminal setup**.
- ★ Support eight RS422/485 serial port.
- ★ Can use **DIP SWITCH** to set serial port interface or set by **software setup**.
- ★ Support Auto-Data-Direction-Control feature in RS485.

## **IPORT138 IP to Serial Port Converter Specification :**

### **Hardware Specification:**

- \* CPU: 32bit 100MHz MIPS CPU.
- \* Flash ROM: 16M Byte.
- \* SDRAM: 16M Byte.

### **LAN connection:**

- \*Interface: 10/100Mbps 100BaseT
- \*Connector: RJ45

### **Serial port:**

- \*Interface: RS422/485
  - \*connector: DB9 male.
  - \*Port Number: 8.
  - \*speed: upto 230400bps.
- NOTE: console port share with serial port 1
- NOTE: each serial port can be set to RS422 or RS485 by DIP switch or setup by software.

### **Software Compatibility:**

- \*TCP/IP or UDP/IP connection.
- \*WIN NT/2000/XP/7/8/10 Virtual COM driver.
- \*LINUX raw TTY driver.
- \*SCO UNIX real TTY driver.

### **Power Requirement:**

- \*5VDC @ 1600mA.

### **Dimension:**

205\*135\*48mm.

### **Environment:**

- \*Operating temperature: 5--40 °C.
- \*Operating humidity: 10--90%RH.
- \*Storage temperature: 0--65 °C.
- \*Storage humidity: 5--90%RH.

## **Other relative product information:**

- APOINT200: IP to two RS232 serial port converter.
- APOINT020: IP to two ground isolated RS232 serial port converter.
- APOINT101: IP to one RS232 and one ground isolated RS422/485 serial port converter.
- APOINT400: IP to four RS232 serial port converter.
- APOINT040: IP to four ground isolated RS232 serial port converter.
- APOINT080: IP to eight ground isolated RS232 serial port converter.
- APOINT800: IP to eight RS232 serial port converter.
- IPOINT138I: IP to eight ground isolated RS422/485 serial port converter.
- IPOINT114: IP to four RS232/RS422/RS485 serial port converter.
- IPOINT118: IP to eight RS232/RS422/RS485 serial port converter.

\*\*\*All names are the trademarks of their respective organization.



### **RAYON TECHNOLOGY CO., LTD.**

2F, No. 177, Chung Shan 2 Rd., Lu Chou, New Taipei city, Taiwan.

TEL: 886-2-82858362 FAX: 886-2-82857065

E-Mail: [rayon@ms1.hinet.net](mailto:rayon@ms1.hinet.net) ; [info@rayontech.com.tw](mailto:info@rayontech.com.tw)

WEB: <http://www.rayontech.com.tw>