

GTS-586/588 Communications Server Family

Features :

- **16 ports speeds up to 115.2 Kbps.**
Concurrently provides 115.2K full speed throughput on each port. Full modem control RS-232C on all ports. Port speed independent with auto baud capability.
- **Multiple Terminal sessions.**
Up to 8 concurrent sessions on each port against multiple hosts with hot-key switching.
- **Restrict Ports and Network access.**
Provides menu-profile to define port's users and restrict user access to network resources.
- **Automatically connect default Host.**
Automatically connect to pre-defined host and provides security to make user easily connect to service host.
- **Dial-up/in modem access.**
Connect dial-up modems to network host as locally attached.
- **TCP/IP, SLIP, CSLIP and PPP.**
ARP, IP, UDP, ICMP, TCP, TFTP, BOOTP, FINGER, TELNET, and RLOGIN.
- **Full IP routing services.**
Supports both static route and dynamic RIP.
- **Network sharing parallel printer.**
Provides high-speed parallel printer interface for printer connections across the network.
- **Domain name service.**
Auto-connect Domain Name Server to translate host name to IP address.
- **Auto switch fault tolerance Host session.**
Provides remote commands to close fault host session and rebuild secondary host connection.
- **Flash RAM upgrade software.**
Support BOOTP/TFTP to download upgrade software and configuration from a network based load server.
- **Remote Administration.**
Provides remote console, talented, allowing administrator to do remote management.
- **Manageable via SNMP MIB-II.**
Build-in SNMP MIB-II agents for management by any centralized SNMP-based administrative system.
- **High-speed RISC processor.**
32-Bits RISC processor ensures high performance and throughput.
- **Host base extensive Security and accounting.**
Supports RADIUS and TACACS+ security server for authentication and accounting.



Overview :

The GTS-586/586C Communications Server are high-performance terminal server, remote Ethernet router, and asynchronous devices controller that provide comprehensive solutions for a range of applications. The GTS-586s servers bring the benefits of network connectivity to a wide variety of asynchronous devices, from terminals and PCs to bar code readers and data acquisition devices. A GTS-586s server simplifies your wiring by providing serial ports where that are needed-in a wiring closet, in a work group area or almost anywhere.

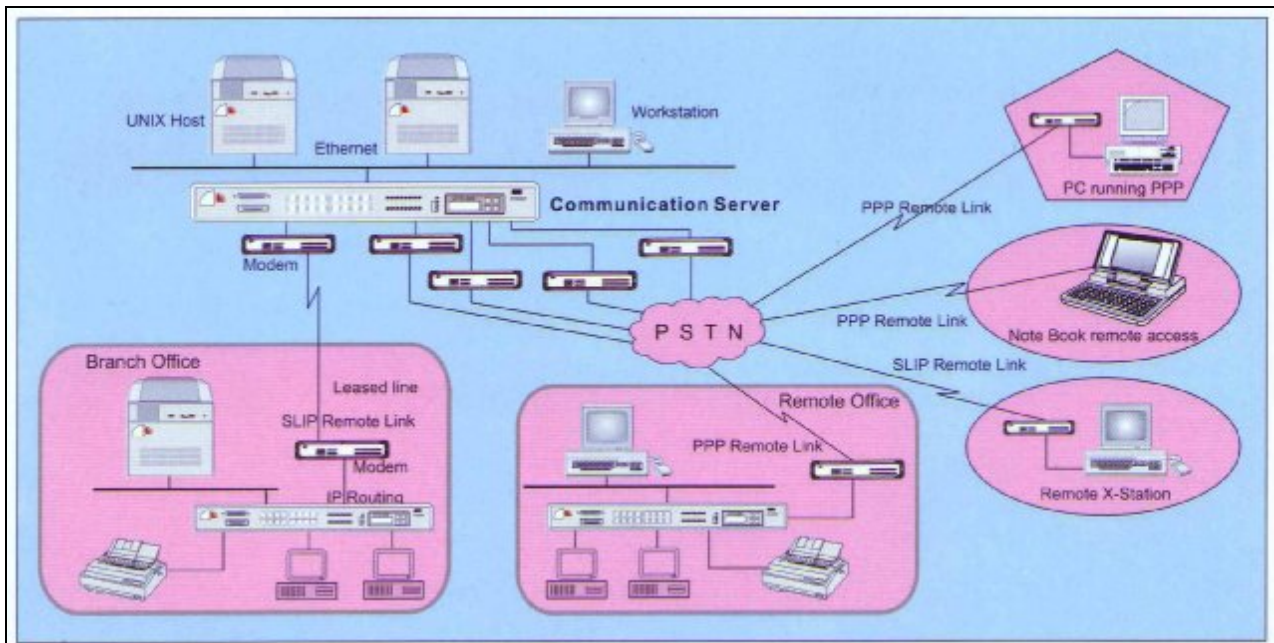
This connectivity permits flexible and cost-effective growth of data communications in multivendor environments. The GTS-586s Communications Server allow terminal and PC users to share resources and run applications on wide variety of host computers. As a result, you can realize full cost benefits from the ASCII terminals and hosts that you've already installed, and also save the expense and inconvenience of single connections between terminals and host system.

The GTS-586s Communications Server supports SLIP, CSLIP, and PPP, allowing Server to run TCP/IP over serial lines. Using these features, you can connect remote GTS-586s Servers, PCs, X-Windows, and Hosts. Actually, the Server can work as a router to link remote network and local network together. Dependent on your specified, the GTS-586s Server can attach up to 16 SLIP/CSLIP, or PPP interfaces.

A Comprehensive Network Solution

Communications Servers for network
connectivity in multivendor environments

◆ GTS-586/588 Communications Server Family ◆



SPECIFICATIONS

Memory Size	4 Mbytes DARM + 512K Flash
Serial Ports	GTS-586 : 16 RS-232C GTS-588 : 8 RS-232C
Serial Line Speeds	110 bps to 115.2 bps
Serial Port interface	RJ45 DTE
Standard Protocols	TCP/IP, ARP, ICMP, UDP, TIME, FINGER, BOOTP, TFTP, DNS, TELNET, RLOGIN, SLIP, CSLIP, PPP, RIP, RADIUS

SERIAL PORTS

Character Width	5 to 8 bits
Stop Bits	1, 2 bits
Parity	None, Even, Odd
Data Speed	110 to 115200 bps + autobaud
Modem Control	DTR, DSR, RTS, CTS, DCD
Flow Control	XON/OFF, RTS/CTS
Interface	EIA RS-232C
Connector	Female RJ-45

PARALLEL PORT

Interface	Centronics
Connector	Female DB-25

NETWORK

Interface	Ethernet / IEEE 82.03
Connector	AUI(10 Base 5), BNC(10 Base 2) UTP(10 Base T)

RFC

IP and Options	RFCs 791, 1122
ARP	RFCs 826
ICMP	RFCs 792, 1122
SLIP, CSLIP	RFCs 1055, 1044
PPP	RFCs 1331, 1332
BOOTP, TFTP	RFCs 783, 906
TCP and Options	RFCs 793, 1122
UDP	RFCs 768
DNS	RFCs 920, 1034, 1035
SNMP MIB-II	RFCs 1089, 1155-1058, 1123
TELNET	RFCs 854-861, 1123
RLOGIN	RFCs 951, 1084
TIME	RFCs 868
FINGER	RFCs 1196
RIP	RFCs 1058, 1388
RADIUS	RFCs 2138, 2139

PHYSICAL

Front Panel Indicators	Power, Network Activity, Serial Line I/O Activity 2"
Dimennsion	high * 19" wide * 11.5" deep (RACK MOUNT)
Power	90-264 VAC, 47-63Hz
Operating Environment	Temperature 0-50°C Humidity 10% - 90% non-condensing LCD Control Panel UL, FCC Class-A

OPTION APPROVALS