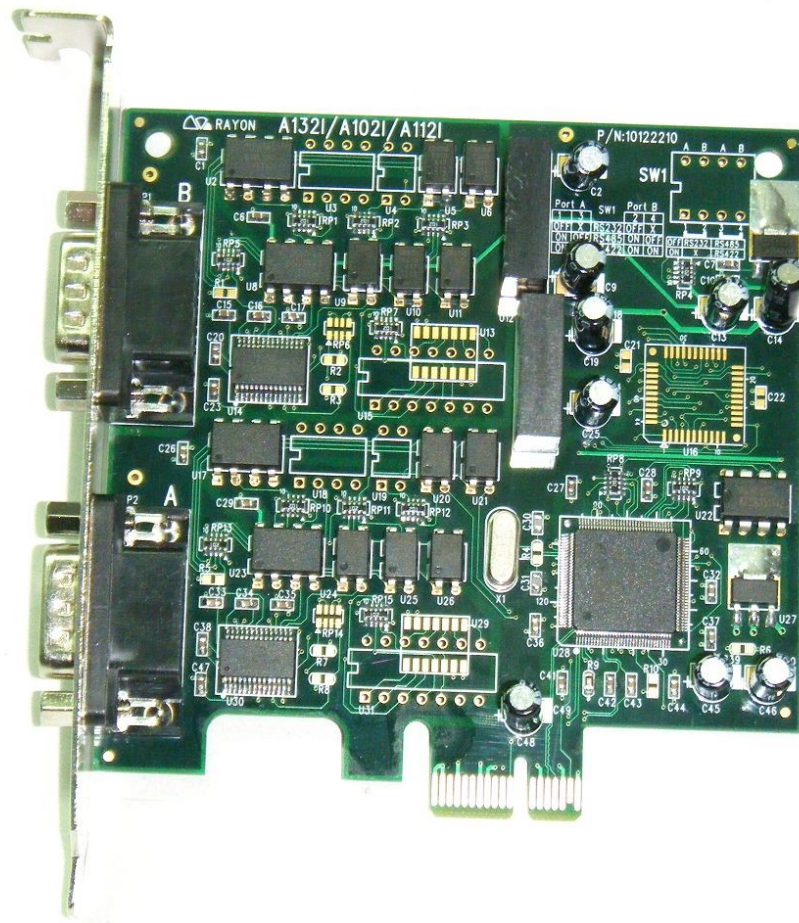


A102I Advanced PCIe Card

PCIe Bus Two Port Card

Support Ground Isolated RS232



★ Suitable for **industrial control**

★ Suitable for **Windows 2000/XP**

★ Suitable for **Vista & WIN7/8/10**

★ Suitable for **Linux**

A102I Specification :

Serial Communication Controller :

*type : ASIX MCS9922.

Hardware compatibility :

*PCIe bus slot.

Software compatibility :

- * Windows 2000/XP.
- * Windows Vista.
- * WIN7/8/10
- * Linux.
- * Other operation system.

Dimension :

- * A102I card: 100 * 97 mm.
- * A102I model with standard PCIe bracket.

System I/O & IRQ mapping :

- *I/O mapping assigned by PCI BIOS.
- *Memory mapping assigned by PCI BIOS.
- *IRQ mapping assigned by PCI BIOS.

Port capability :

- *number of port : 2 ports per card.
- *Interface : Ground Isolated RS232.
- *Baud Rate: each port can be configured to 50--230400bps.
- *Connector type: DB9 male connector.

NOTE:A102IF model can support up to 921600bps

Environment :

- *operating temperature : 0°C to 55°C
- *operating humidity : 10% to 95% RH
- *storage temperature : 0°C to 65°C
- *storage humidity : 5% to 95% RH

Performance upgrade capability and relative products :

- *A102 : PCIe card support two RS232 ports.
- *A132 : PCIe card support two RS422/RS485 ports.
- *A112 : PCIe card support two RS232/RS422/RS485 ports.
- *A104 : PCIe card support four RS232 ports.
- *A134 : PCIe card support four RS422/RS485 ports.
- *A114 : PCIe card support four RS232/RS422/RS485 ports.
- *A168 : PCIe card support eight RS232 ports.

***All names are the trademarks of their respective organization.



RAYON TECHNOLOGY CO., LTD.

2F, No. 177, Chung Shan 2 Rd., Lu Chou, New Taipei city, Taiwan, R.O.C.

TEL: 886-2-82858362 FAX: 886-2-82857065

E-Mail: rayon@ms1.hinet.net or info@rayontech.com.tw

WEB: <http://www.rayontech.com.tw>